

Foil Soil Spoil

This month's products exemplify sustainability while aiding efforts to restore ecosystems and halt erosion.

Soil Solid

Deltalok Inc. in Vancouver, Canada, has devised a mechanism that interlocks soil bags to create a greener, concrete-free, erosion control alternative.

The Deltalok standard unit, made of a tough lightweight plastic, is a rectangular plane with strategically positioned claws on top and bottom to grab and hold onto Deltalok GTX soil bags as they are stacked in a pyramid formation. The unit locks the bags into place, improving height, stability, and strength. Typically the water-permeable bags, which are made of non-woven geotextile material, are filled with native material available on site, but the bags can be filled with your choice of seeded media or can be hydroseeded after installation.

According to Deltalok, the system improves the structural integrity of typical soft armor applications and cancels the need for concrete, steel, drainage zones, leveling pads, or heavy equipment. Applications include culvert headwalls, stream bank protection, riverbank protection, retaining walls, highway walls, bridge abutments, noise barriers, blast walls and bunkers, flood protection walls, and garden walls.

For more information visit www.deltalok.com or call 877-335-8256.



THIS GOLF COURSE IN KANGWON, KOREA, USES DELTALOK INTERLOCKING BAGS THAT HAVE BEEN HYDROSEEDING TO CREATE A GRASS WALL.

Coconut control

RoLanka International in Strawbridge, Georgia, offers an array of erosion control products including the all-natural Bio-D Mat. The mat is a semipermanent erosion control blanket woven from machine-spun bristle coir twines. RoLanka blan-



WHEN WOVEN, AS ABOVE, COCONUT HUSK TWINE ACTS AS A NATURAL EROSION CONTROL OPTION, SHOWN HERE.



kets keep seeds in place, support seed germination and growth until good vegetative cover is established, and eventually decompose and return to the soil.

Coir, which is relatively new to the erosion control industry, is typically processed from ripe coconut husks. It is completely biodegradable and environmentally safe, with a slow decomposition rate, wet tensile strength, and high water-holding capacity.

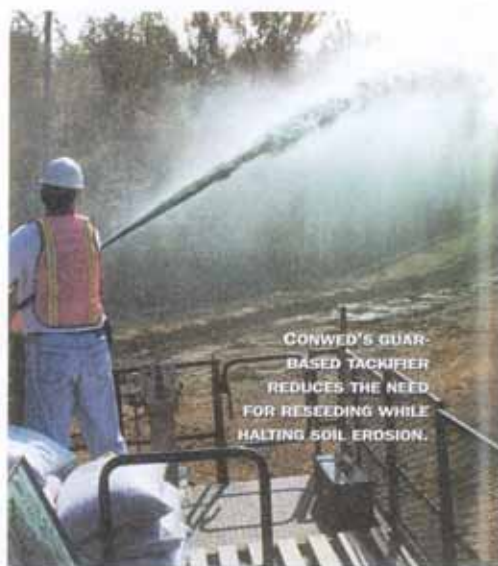
Bio-D Mat is 100 percent biodegradable but has a functional longevity of 4–6 years. The mat comes in three sizes, which refer to the tightness and density of the weave. RoLanka recommends that an

inner coir fabric be used when holding fine-soil particles, with a high-strength blanket as an outer fabric to provide support to the wrapped soil layers. It is important to fasten the blankets securely with anchors.

For more information on this and other coir products, visit www.rolanka.com or contact 800-760-3215.

Tenacious Tackifier

Conwed Fibers in Buffalo Grove, Illinois, offers Con-Tack as an erosion solution for laying mulch or seed



CONWED'S GUAR-BASED TACKIFIER REDUCES THE NEED FOR RESEEDING WHILE HALTING SOIL EROSION.

in your built or restored landscape. The 100 percent guar-based tackifier reduces the need for reseeding and minimizes soil erosion by stabilizing mulch and straw. According to Conwed Fibers, Con-Tack helps increase flow and the pumping properties of mulch, allowing hydraulic machinery to run efficiently during application.

Con-Tack is made of a guar-gum, hydro-colloid polymer. The product is available in both 50-pound bags and 10-pound bags.

For more information visit www.conwedfibers.com or call 800-366-1180.